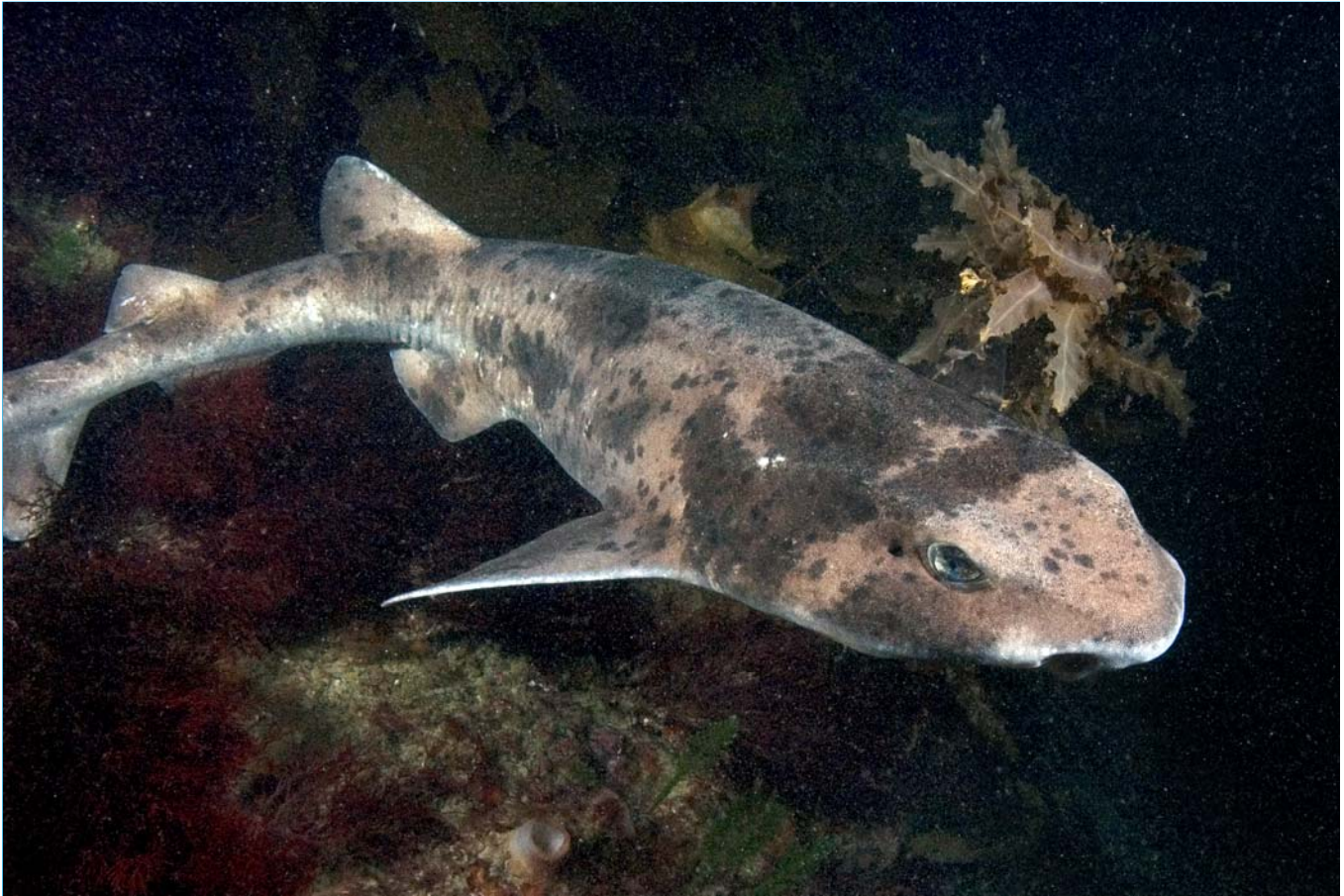


Draughtboard Shark

Cephaloscyllium laticeps



Draughtboard Shark, *Cephaloscyllium laticeps*,
photo courtesy of Mark Norman

This small bottom-dwelling shark has tile-like teeth for crushing shellfish and sea urchins. Its name comes from the patchwork blotches on its back. It is also known as a Swellshark as it can pump itself up with water (or air) like a pufferfish. This shark lays small purse-like egg cases covered in regular ridges and with curled strings off its four corners. The eggs are tangled amongst the roots of seagrasses and algae and left to develop on their own.