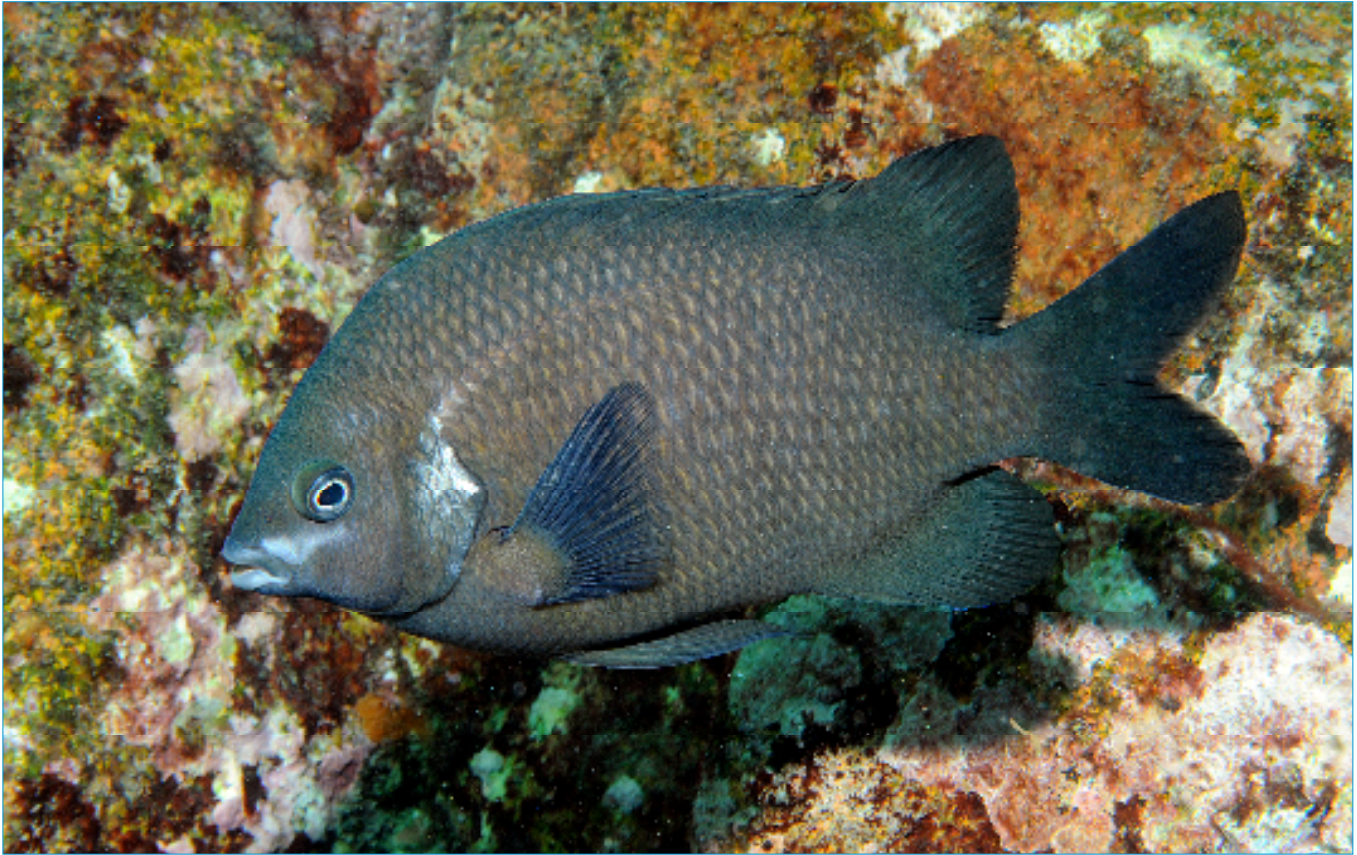


White-Ear Scalyfin

Parma microlepis



White-Ear Scalyfin, *Parma microlepis*, photo courtesy of Mark Norman.

This damselfish is easily recognised by the square body shape, grey colour and white patch behind the gills. Juveniles are bright orange with iridescent purple markings but still show the white 'ear' patch. This species is mainly a plant eater, but will also feed on worms, shrimps and other small invertebrates. It holds territories using a cave or ledge as the central shelter.